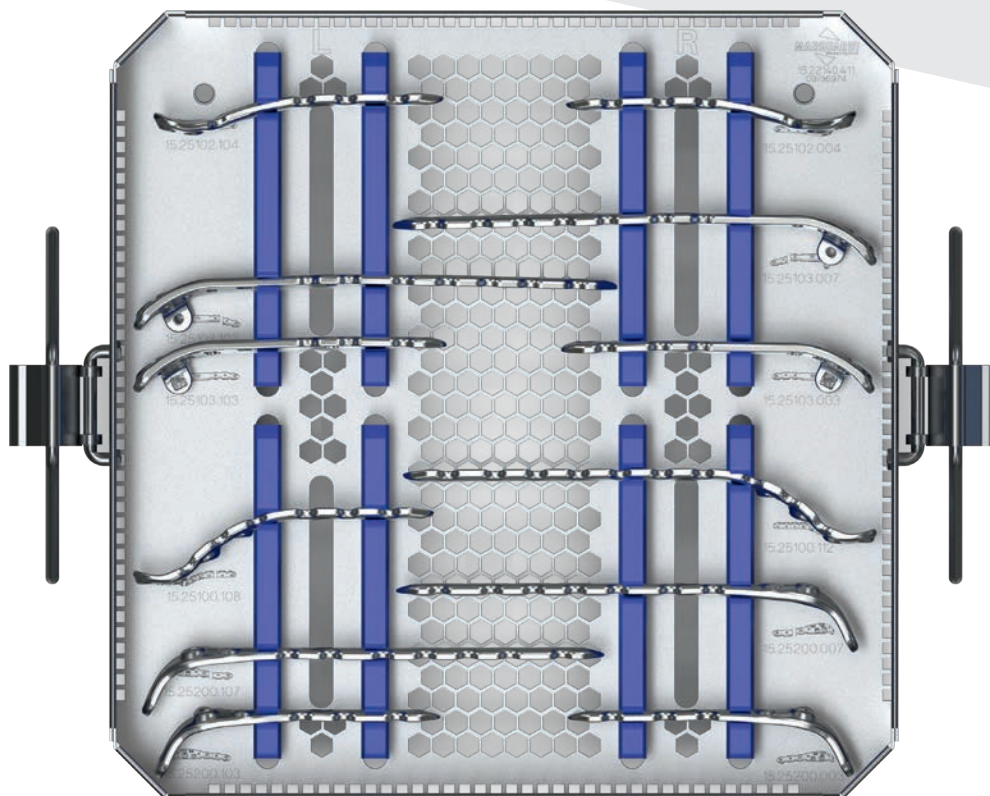


MAXsterile

The sterile concept for osteosynthesis

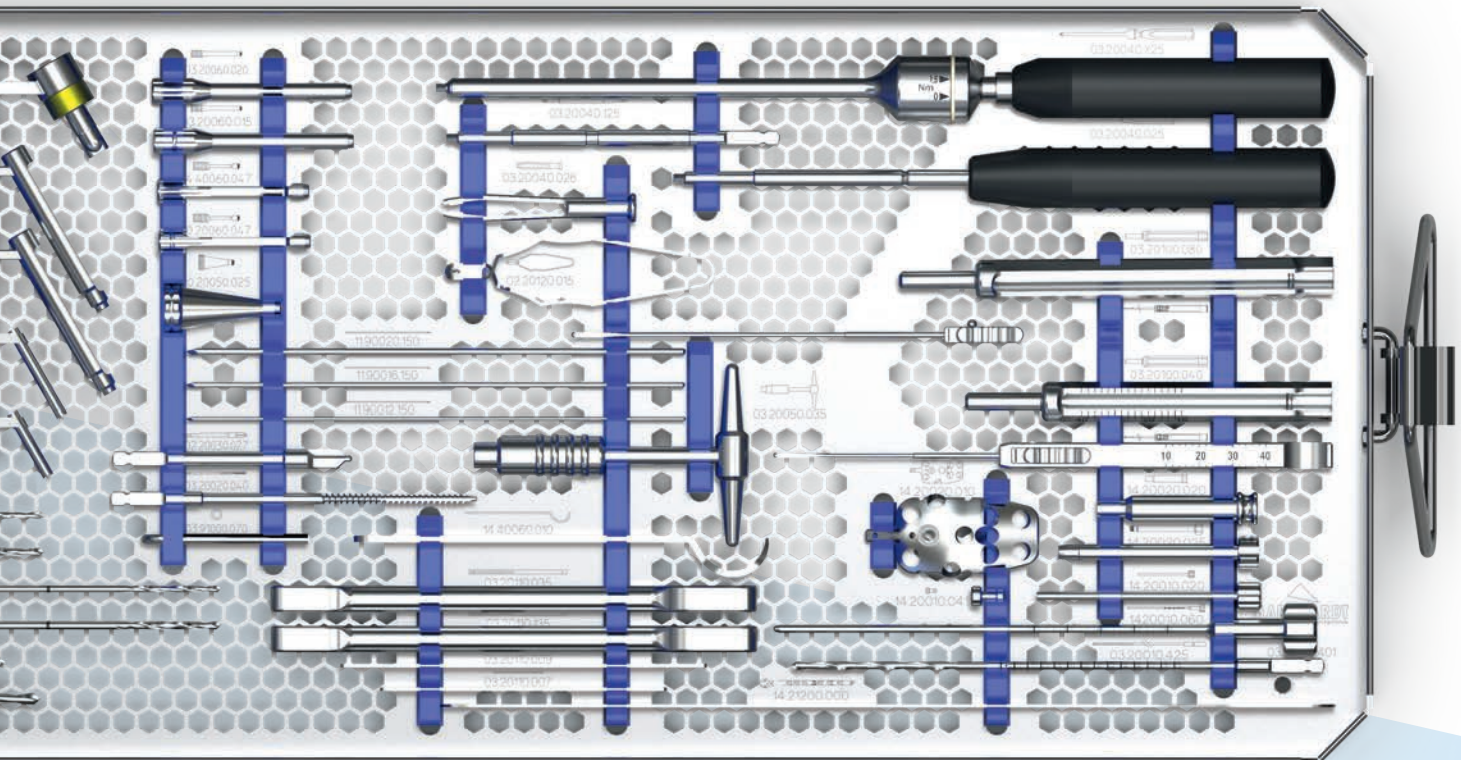
The unique all-in-one set of instruments for high-quality implants

With the universal set of instruments, you can simplify your theatre organisation. You can use all small fragment implants with one set of instruments.

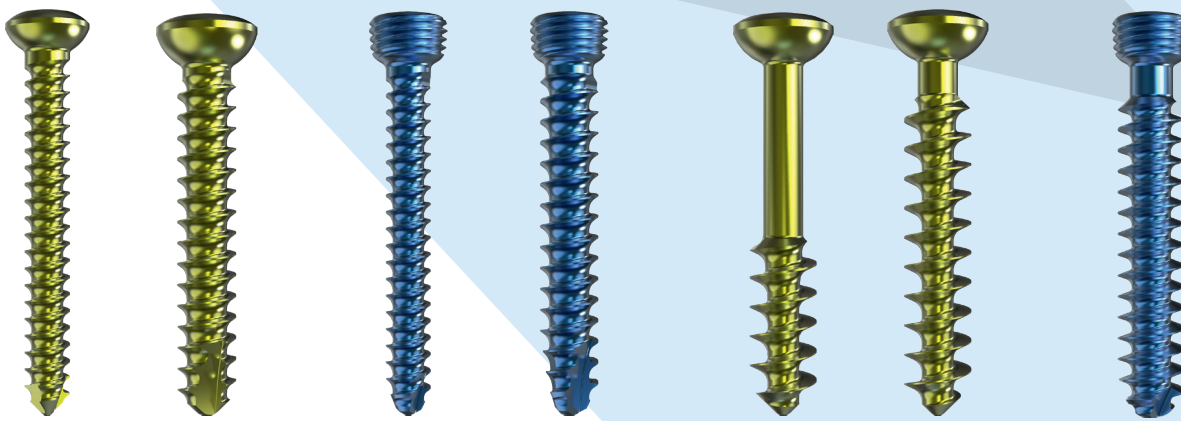


Trial implants available for every sterile plate system.

A clearly arranged set of instruments - compatible with small fragment and foot plates.



A total of seven screw types are available for surgical treatments with our small fragment and foot implants.



Cortical Screws
 Ø 2.7 mm self-tapping
 Ø 3.5 mm self-tapping

Locking Cortical Screws
 Ø 2.7 mm self-tapping
 Ø 3.5 mm self-tapping

Cancellous Bone Screws
 Ø 4.0 mm short threaded
 Ø 4.0 mm fully threaded

Locking Cancellous Bone Screws
 Ø 4.0 mm self-tapping

Distal Radius and Ulna



WINSTA-R Locking Distal Radius Plates,
10.11917.XXXS



WINSTA-R Locking Distal Radius Plates,
10.11915.XXXS



WINSTA-R Distal Ulna Hook Plates,
10.11918.XX6S



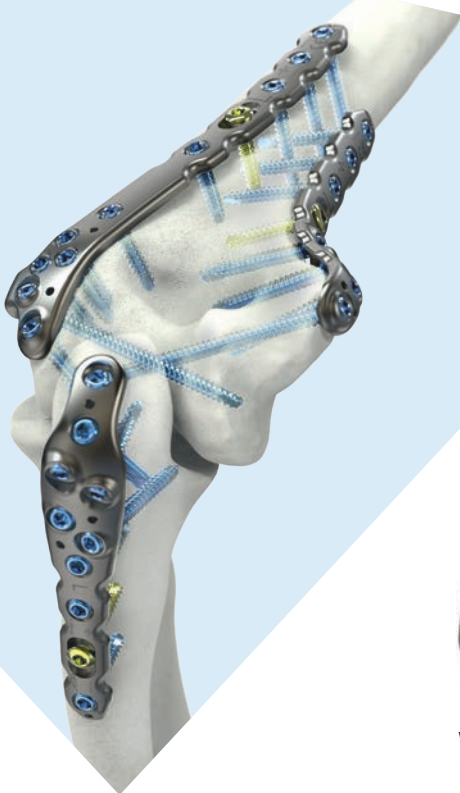
WINSTA-R Distal Ulna Plates,
10.11918.XX7S



Locking Compression Plates undercut,
03.15114.XXXS



Locking One-third Tubular Plates,
03.15130.XXXS



Distal / Proximal Humerus and Olecranon



WINSTA-E Distal Humeral Plates
posterolateral, 15.15103.XXXS



WINSTA-PH 2 Locking Proximal
Humeral Plates, 14.11200.XXXS



WINSTA-E Distal Humeral Plates medial,
15.15100.XXXS



WINSTA-E Distal Humeral Plates lateral,
15.15102.XXXS



WINSTA-E Olecranon Plates,
15.15200.XXXS

Angle-stable Plate Systems

Clavicle



WINSTA-C Locking Clavicle Plates,
J-Shaped, 14.15100.XXXS



WINSTA-C Locking Clavicle Plates
S-Shaped, 14.1510X.XXXS



WINSTA-C Locking Clavicle Hook Plates,
14.15104.XXXS



WINSTA-C Locking Clavicle Plates lateral,
14.15103.XXXS

Distal tibia and fibula



WINSTA-FiT Distal Tibia Plates medial,
13.15100.XXXS



WINSTA-FiT Distal Tibia Plates anterolateral,
13.15200.XXXS



WINSTA-FiT Distal Tibia Plates posterior,
13.15300.XXXS



WINSTA-FiT Distal Fibula Plates lateral,
13.15500.XXXS



PEDUS-L Locking Lapidus Plates,
12.11123.XXXS



PEDUS-L Locking Plantar Lapidus
Plates, 12.11124.XXXS



PEDUS Locking X-Plates,
12.11220.XXXS



PEDUS-L Locking T-Plates,
12.11210.00XS



PEDUS-L Locking Plates straight,
12.11211.XXXS



PEDUS Locking L-Plates 90°,
12.11212.XXXS



PEDUS Locking MTP 1 Fusion Plates,
12.1125X.XXXS

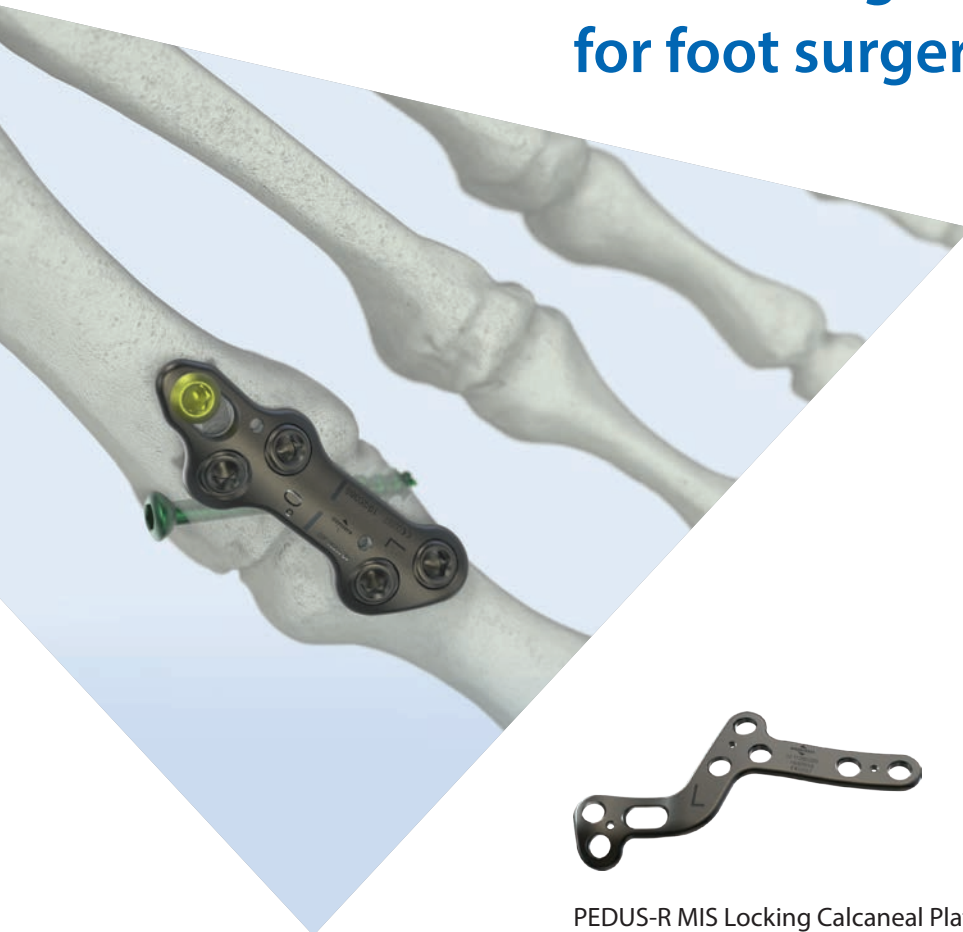


PEDUS MTP 1 Fusion Plates short,
12.1125X.XXXS



PEDUS Locking Multifix Plate,
12.11018.007S

PEDUS - high-quality implants for foot surgery



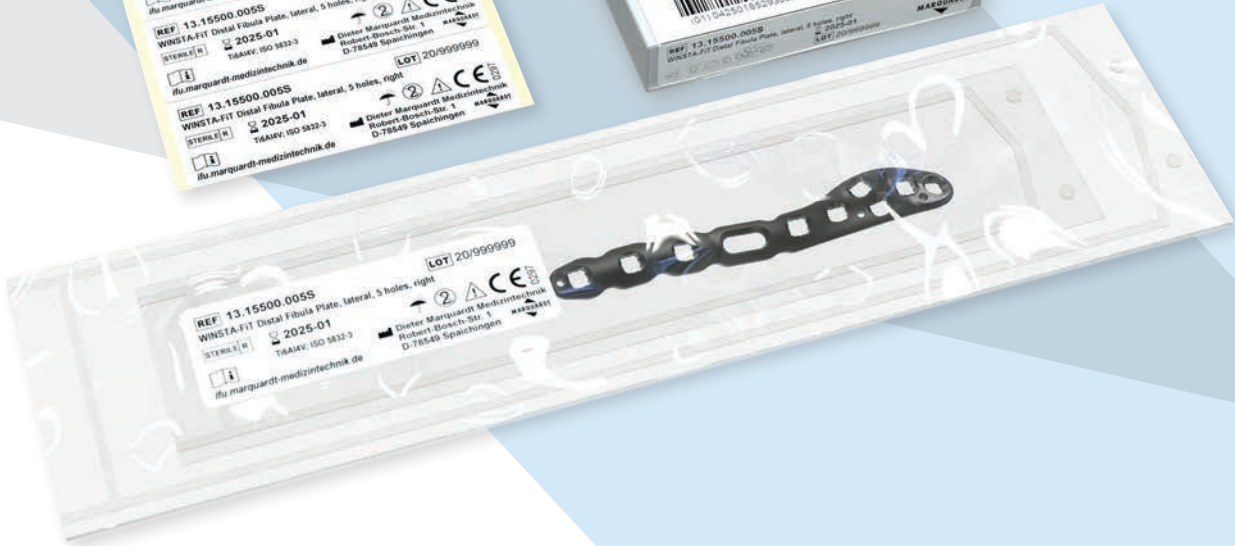
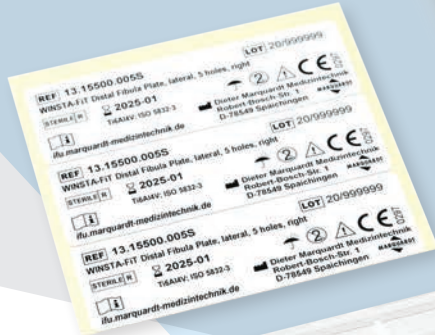
PEDUS-R PEDUS-R Locking Calcaneal
Plates, 12.11241.XXXS



PEDUS-R MIS Locking Calcaneal Plates,
12.11260.XXXS



PEDUS-R Locking Universal Plates,
12.11123.XXXS



STERILE PACKAGING



Small. Handy. Compact.

MAXimum Simplicity. Individual Solutions.



Marquardt Medizintechnik GmbH

Robert-Bosch-Str. 1 • D-78549 Spaichingen
Phone +49 7424 9581-0 • Fax +49 7424 5014-41
info@marquardt-medizintechnik.de
www.marquardt-medizintechnik.de



Distributed by Marquardt UK Ltd.

The Engine House Bexley • 2 Veridon Way
Erith DA18 4 AL • United Kingdom
Phone 0208-320-1077
info@marquardt-uk.com • www.marquardt-uk.com